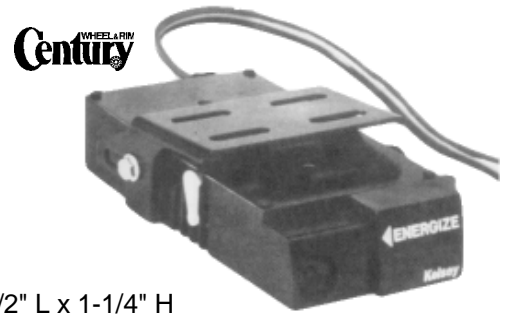


Electronic Brake Controller

It's completely electronic. One of the most advanced RV brake controllers on the market. Use it on domestic and imported vehicles. You'll find that stopping a trailer with an all-electronic controller has never been smoother.

- 100% electronic. Solid-state advanced design gives maximum reliability.
- Easy installation. Simple 4-wire hook-up required.
- Built-in automatic current limiter protects controller from trailer brake wiring shorts.
- Red LED indicator light monitors performance and proper controller response.
NO HYDRAULIC CONNECTION or foot pedal adapters.
- Built-in load control. Allows trailer braking adjustment by dialing the control knob inside the towing vehicle.
- Automatic and manual operation.
- Designed for 2- and 4-wheel trailer brake systems.
- Compact and lightweight.
- One-year warranty.



81741-B
3-1/4" W x 6-1/2" L x 1-1/4" H
\$124.34

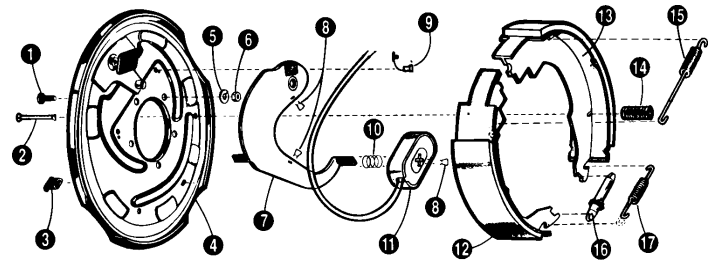
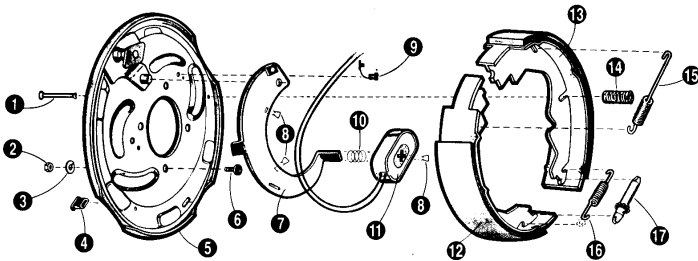
Electric Brakes



Determine the size of your brake by measuring the diameter of the mounted brake shoe.

Next measure the width of the lining.

NOTE: When determining the left or right side brake assembly, always position the brake so that the magnet is at the BOTTOM. For electric brakes, the actuating arm always curves from the pivot pin to the magnet - toward the right on right-hand brakes and toward the left for left-hand brakes.



10" x 2-1/4" ELECTRIC BRAKE ASSEMBLY

| BRAKE PART DESCRIPTION | NO. | PART NO. | PRICE |
|------------------------------|-----|--------------|----------------|
| RH Brake Assembly Complete | 0 | 4701R | \$55.76 |
| LH Brake Assembly Complete | 0 | 4701L | 55.76 |
| Shoe Hold Down Pin | 1 | 568094 | P.O.R. |
| Brake Mounting Nut 7/16"-20 | 2 | 363312 | P.O.R. |
| Brake Lockwasher 7/16" | 3 | 363335 | P.O.R. |
| Plug Adjuster Slot | 4 | 568089 | P.O.R. |
| Backing Plate Assembly | 5 | ---- | P.O.R. |
| Brake Mounting Stud 7/16"-20 | 6 | 363900 | P.O.R. |
| RH Lever Assembly | 7 | 568121 | P.O.R. |
| LH Lever Assembly (Shown) | 7 | 568122 | P.O.R. |
| Clip, Wire & Magnet | 8 | 568092 | P.O.R. |
| Strain Relief, Wire | 9 | 568090 | P.O.R. |
| Magnet Spring | 10 | 568103 | P.O.R. |
| Magnet Assembly (Green Wire) | 11 | 568119 | P.O.R. |
| Primary Shoe & Lining | 12 | 568112 | P.O.R. |
| Secondary Shoe & Lining | 13 | 568117 | P.O.R. |
| Shoe Hold Down Spring | 14 | 568093 | P.O.R. |
| Shoe Retractor Spring | 15 | 568097 | P.O.R. |
| Adjuster Screw Spring | 16 | 568095 | P.O.R. |
| Adjuster Screw Assembly | 17 | 568110 | P.O.R. |
| Adjuster Screw Socket | 17 | 568086 | P.O.R. |

12" X 2" ELECTRIC BRAKE ASSEMBLY

| BRAKE PART DESCRIPTION | NO. | PART NO. | PRICE |
|------------------------------|-----|--------------|----------------|
| RH Brake Assembly Complete | 0 | 4704R | \$72.22 |
| LH Brake Assembly Complete | 0 | 4704L | 72.22 |
| Shoe Hold Down Pin | 1 | 363989 | P.O.R. |
| Brake Mounting Stud 3/8"-24 | 1 | 363989 | P.O.R. |
| Shoe Hold Down Pin | 2 | 568094 | P.O.R. |
| Plug Adjuster Slot | 3 | 568089 | P.O.R. |
| Backing Plate Assembly | 4 | ---- | P.O.R. |
| Brake Lockwasher 3/8" | 5 | 363334 | P.O.R. |
| Brake Mounting Nut 3/8"-24 | 6 | 363333 | P.O.R. |
| RH Lever Assembly | 7 | 568113 | P.O.R. |
| LH Lever Assembly (Shown) | 7 | 568114 | P.O.R. |
| Clip, Wire & Magnet | 8 | 568092 | P.O.R. |
| Strain Relief, Wire | 9 | 568090 | P.O.R. |
| Magnet Spring | 10 | 568103 | P.O.R. |
| Magnet Assembly (White Wire) | 11 | 568111 | P.O.R. |
| Primary Shoe & Lining | 12 | 568126 | P.O.R. |
| Secondary Shoe & Lining | 13 | 568127 | P.O.R. |
| Shoe Hold Down Spring | 14 | 568093 | P.O.R. |
| Shoe Retractor Spring | 15 | 568096 | P.O.R. |
| Adjuster Screw Assembly | 16 | 568110 | P.O.R. |
| Adjuster Screw Socket | 16 | 568086 | P.O.R. |
| Adjuster Screw Spring | 17 | 568095 | P.O.R. |

Gray boxes are non-stocked items, short delivery time.

10

KH METALS AND SUPPLY 2727 Main St. Riverside, CA 92501
Phone 951-683-3787 Toll Free 800-323-0829 Fax 951-684-6150 Web khmetals.com

10

All Prices Subject To Change Without Notice.

11-5-2011